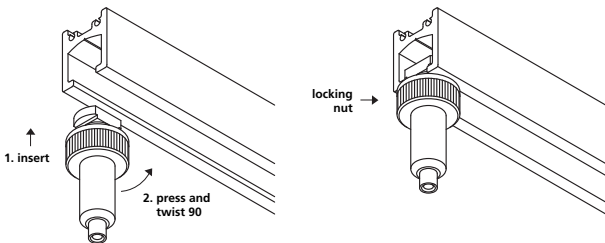
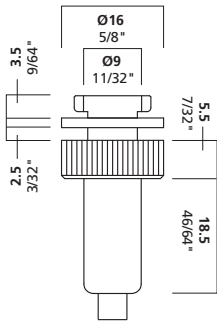


# BS1R



## °BS1R

BS1R is Arakawa's gripper-type, top connector rail clip available for hanging cable perpendicular to the CRB/CRC Rail system. This rail clip can be attached at any point on the rail, without sliding it in from the end. The locking nut prevents unintentional movement of the rail clip once tightened in place. The BS1R also has a hole in foot of the part to allow excess cable to pass through into the channel of the rail.



## ° Product Information

### cable size

3/64" 1.2 mm

1/16" 1.5 mm

1-2

### maximum weight

3/64" 40 lbs. 18 kg

1/16" 65 lbs. 30 kg

### function

rail clip for CRB/CRC Rail

### installation instructions

To install the BS1R / BS32RSET rail clips, align properly, insert into the rail, twist 90°, then tighten the locking nut. Cable must be inserted 1/2" - 3/4".

Make sure all rail clips are completely tightened. Failure to do so will weaken the system.

## Arakawa Hanging Systems

2505 SE 11th Avenue, Suite 122

Portland, Oregon 97202

phone: 503.236.0440

fax: 503.236.0427

toll free: 888.272.5292

[www.arakawagrip.com](http://www.arakawagrip.com)



Copyright © 2007 Arakawa & Co., Ltd. All rights reserved. Arakawa products are covered by U.S. and foreign patents, issued and pending. Specification and price change privileges reserved.