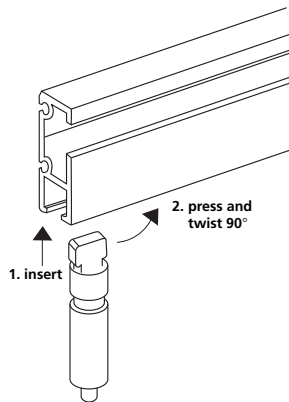
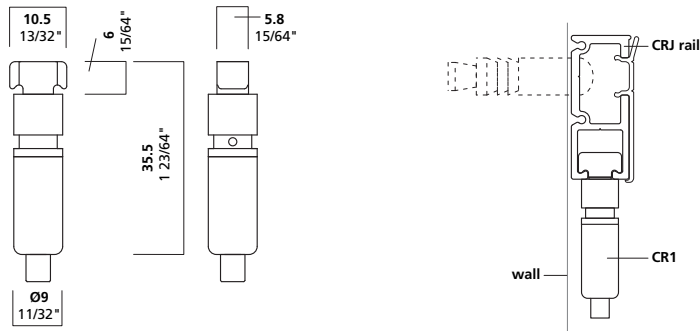


# CR1



## °CR1

CR1 is Arakawa's rail clip available for hanging cable from the CRJ Rail system. CR1 incorporates the Arakawa gripper, so you simply poke the cable end into the gripper and it holds. Cable must be inserted 1/2" - 3/4", and must be soldered.



## ° Product Information

### cable size

3/64" 1.2 mm

1/16" 1.5 mm

1-2

### maximum weight

3/64": 40 lbs. 18 kg

1/16": 65 lbs. 30 kg

### function

rail clip for CRJ rail

### installation instructions

Install the CR1 rail clip on the CRJ rail as shown, align properly, insert into rail, press and twist 90°.

## Arakawa Hanging Systems

2505 SE 11th Avenue, Suite 122

Portland, Oregon 97202

phone: 503.236.0440

fax: 503.236.0427

toll free: 888.272.5292

[www.arakawagrip.com](http://www.arakawagrip.com)

Copyright © 2007 Arakawa & Co., Ltd. All rights reserved. Arakawa products are covered by U.S. and foreign patents, issued and pending. Specification and price change privileges reserved.

