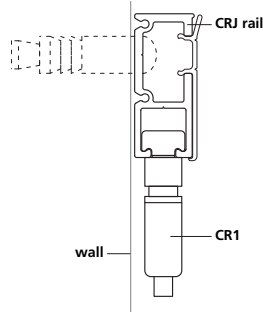
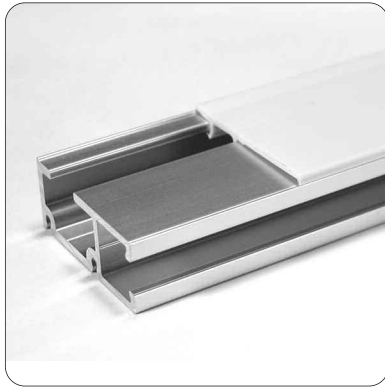


CRJ Rail



Product Information

cable size

3/64" 1.2 mm

1/16" 1.5 mm

1-2

maximum weight

3/64": 40 lbs. 18 kg

1/16": 65 lbs. 30 kg

function

wall-mount rail

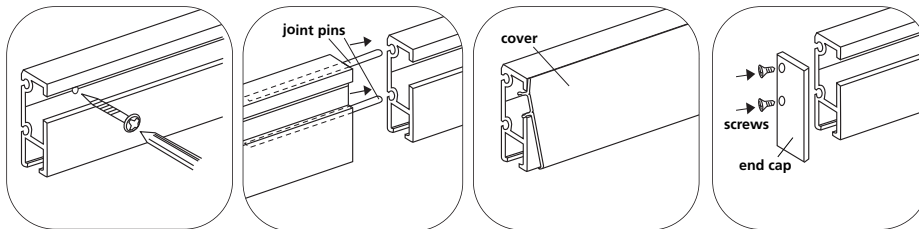
installation instructions

See "CRJ Rail Mount & Assembly" below.

CRJ Rail

The CRJ forms the framework of Arakawa's moderate weight art hanging system. Use it for displaying art up to 65 pounds (using 1/16" Ø cable). Rails come in 6' lengths and include an off-white paintable cover and alignment pins for connecting adjoining rails. End caps are purchased separately (Part # CRJEC).

Like the CRE, the CRJ mounts easily on walls and can be joined for seamless coverage of longer spans. Arakawa rail clips attach to the rail at any location and can be moved horizontally along the rails.



CRJ Rail Mount & Assembly

Step 1

Determine and mark desired location of the CRJ rail(s). For best results, use a level. If you plan to run the track the full length of the wall, begin in the corner or the end of the wall. The CRJ Rail can be mounted flush with the ceiling.

Step 2

Drill holes in the rail appropriate for anchoring surface (minimum placement is 24" for steel framing, 18" for wood framing or other materials). Attach the aluminum rail to the wall surface (screws not provided) (figure 1). If mounting to cement or masonry, use appropriate anchors (not provided). If possible, mount to studs, or use

sheetrock anchors (not provided). Connect rails with the provided joint pins (figure 2). When using alignment pin, there will be about 1/8" space between adjoining rails.

Step 3

Simply fit the cover onto the rail (figure 3) and press firmly until it snaps into place. An optional accessory are the metal end caps and screws to provide a neat finish (figure 4) for central wall installations and exposed corners. If desired, paint the cover with a latex paint to match your decor. Allow paint to dry.

Arakawa Hanging Systems

2505 SE 11th Avenue, Suite 122

Portland, Oregon 97202

phone: 503.236.0440

fax: 503.236.0427

toll free: 888.272.5292

www.arakawagrip.com



Copyright © 2007 Arakawa & Co., Ltd. All rights reserved. Arakawa products are covered by U.S. and foreign patents, issued and pending. Specification and price change privileges reserved.