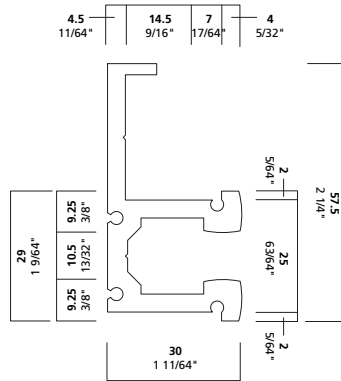
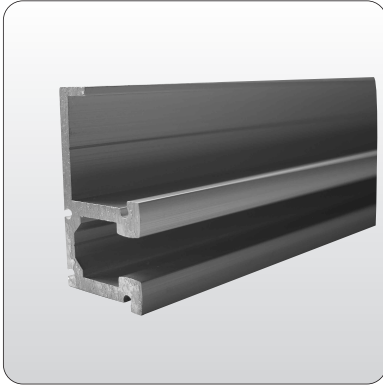


VH4



°VH4

The VH4 rail, a wall mount rail, spans all weight classes in Museum weight options, with three of the five rail fittings falling into weight class 2 and 3 and two rail fittings qualified for very heavy objects in weight classes 4 and 5.

These rail are available in approximately 6' lengths (VH41800) lengths. Custom lengths up to 12' are available as special order items. VH4 rails are designed to be installed before completing wall finishes (drywall, plaster, etc.) and painting.

Installation is always specific to the wall substrate and construction methods. Provided images should give suggestions, but contractors should make final decisions based upon specific site requirements.

° Product Information

cable size

1/16" 1.5 mm
 3/32" 2.5 mm
 1/8" 3.0 mm
 5/32" 4.0 mm

2-5

maximum weight

1/16": 65 lbs. 30 kg
 Maximum Load 187 lbf
 3/32": 155 lbs. 70 kg
 Maximum Load 502 lbf
 1/8": 220 lbs. 100 kg
 Maximum Load 682 lbf
 5/32": 396 lbs. 180 kg
 Maximum Load 1320 lbf

function

Wall mount rail system

installation instructions

See below

Step 1

Determine and mark desired location of rails. Use a level if necessary. If you plan to run the track the full length of the wall, begin in the corner or end of the wall area.

Step 2

Now you are ready to attach the assembled rail to the wall. Anchors should be spaced according to appropriate distances for your wall installation. For example, for wood walls space to attach to studs; if mounting to cement or masonry, use appropriate anchors (not provided). Wall mounting points should be between 12-18" apart. Greater distances will weaken the hanging system. Connect rails with the alignment pin, there will be about a 1/8" space between the adjoining rails. You may also hit the end of the added rail with a rubber mallet to force it against the first rail.

Step 3

Install molding or other coverings if desired at this time.

DO NOT PAINT RAIL LIP UNDER ANY CIRCUMSTANCES.

Arakawa Hanging Systems

2505 SE 11th Avenue, Suite 122
 Portland, Oregon 97202
 phone: 503.236.0440
 fax: 503.236.0427
 toll free: 888.272.5292

www.arakawagrip.com

