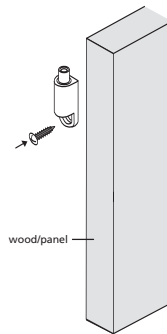
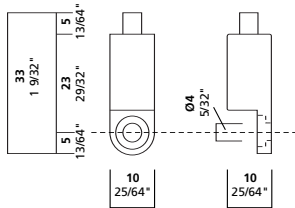


# AD1



## ◦ AD1

AD1 is designed to be screwed into frames, signs or similar with a #4 screw.



## ◦ Product Information

### cable size

3/64" 1.0 - 1.2 mm

1

### maximum weight

40 lbs. 18 kg

### function

midway: wood, plexi, metal

### installation instructions

Screw to panel or wood.



### Arakawa Hanging Systems

2505 SE 11th Avenue, Suite 117

Portland, Oregon 97202

phone: 503.236.0440

fax: 503.236.0427

toll free: 888.272.5292

[www.arakawagrip.com](http://www.arakawagrip.com)

Copyright © 2005 Arakawa & Co., Ltd. All rights reserved.  
Arakawa products are covered by U.S. and foreign patents, issued and pending. Specification and price change privileges reserved.