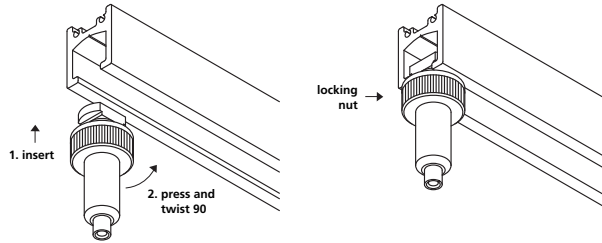
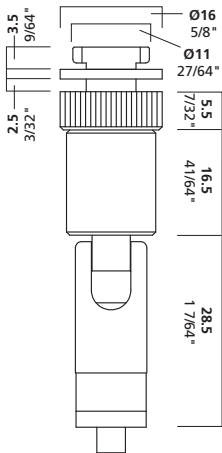


# BS32RSET



## °BS32RSET

BS32RSET is Arakawa's gripper-type, top connector rail clip for hanging angled cable from the CRB/CRC Rail system.



## ° Product Information

### cable size

3/64" 1.2 mm

1/16" 1.5 mm

1-2

### maximum weight

3/64": 40 lbs. 18 kg

1/16": 65 lbs. 30 kg

### function

rail clip for CRB / CRC Rail

### installation

To install the BS32RSET rail clips, align properly, insert into the rail, twist 90°, then tighten the locking nut. Cable must be inserted 1/2" - 3/4". Make sure all rail clips are completely tightened. Failure to do so will weaken the system

## Arakawa Hanging Systems

2505 SE 11th Avenue, Suite 122

Portland, Oregon 97202

phone: 503.236.0440

fax: 503.236.0427

toll free: 888.272.5292

[www.arakawagrip.com](http://www.arakawagrip.com)

Copyright © 2007 Arakawa & Co., Ltd. All rights reserved. Arakawa products are covered by U.S. and foreign patents, issued and pending. Specification and price change privileges reserved.

